

# *SONGS OF CREATION*

**AUGUST 20, 2017**

**Worship – 9:30 a.m.**

**Singing workshop – 10:50 a.m.**

---

## **GATHERING**

PRELUDE

*Earth and all stars*

arr. Wold

Rosi Penner Kaufman, organist

WELCOME AND PRAYER

Duane Graber, worship leader

Hymn #35

*Many and Great*

\*HYMN #46

*I sing the mighty power of God*

## **STORYTELLING**

CHILDREN'S TIME

Jesse Graber and friends

CREATION PSALMS: PSALM 8, 19, 29

Jacob Kaufman and Duane Graber

A LITANY OF PRAISE: PSALM 104 (see insert)

HYMN (see insert)

*Let all creation dance*

SERMON

*Dancing with the stars*

\*HYMN #48

*All creatures of our God and King*

St. 1-3 harmony

St. 4 men in unison

St. 5 women in unison

St. 6 harmony

St. 7 unison

## COMMUNITY BUILDING

### SHARING JOY

*We welcome the introduction of guests and visitors during this time. One way we get to know one another is by signing the friendship registers. Once the register reaches the center aisle, please pass it back to the outer aisle.*

### SHARING CONCERNS

### PRAYING TOGETHER

*Slips of paper are available in the attendance register for those who wish to offer joys and concerns silently and anonymously. These papers, if put in the offering plate, will be placed in the prayer bowl at the front of the sanctuary.*

### OFFERING

Offertory: Melissa Atchison, Bob Atchison, Steve Goeke, Jesse Graber

### ANNOUNCEMENTS

## SENDING

\*SENDING FORTH (inspired by Psalm 65)

L: We will go out

**C: Remembering that you silence the roaring of the seas,  
the roaring of their waves,  
the tumult of the peoples.**

L: We will go out

**C: Remembering that you make the gateways of the morning and the evening  
shout for joy.**

L: We will go out

**C: And remember the promises offered in this sanctuary where you meet us.**

\*HYMN #427

*You shall go out with joy*

\*POSTLUDE

\* Please stand as you are able.

Unless otherwise indicated, hymns are in the blue *Hymnal: A Worship Book*.  
Songs designated “SJ” are in the green *Sing the Journey* hymnal.

Now **Here** God

Here is a place for worship reflections. What are you sensing about God in the here and now?  
What words, images or questions do you want to take with you into this new week?

---

## **RAINBOW MENNONITE CHURCH**

1444 Southwest Boulevard

Kansas City, KS 66103

[www.rainbowmennonite.org](http://www.rainbowmennonite.org)

Office hours: M-F 9 am-4 pm

Pastor Ruth's Blog: [www.overandaroundtherainbow.com](http://www.overandaroundtherainbow.com)

(913) 236-8820

Pastor: Ruth Harder ([ruthh@rainbowmennonite.org](mailto:ruthh@rainbowmennonite.org))

Music Ministries Director: Roseann Penner Kaufman ([music@rainbowmennonite.org](mailto:music@rainbowmennonite.org))

Church Administrator: Carrie Parsons ([office@rainbowmennonite.org](mailto:office@rainbowmennonite.org))

Youth and Outreach Ministries Director: Renee Reimer ([renee@rainbowmennonite.org](mailto:renee@rainbowmennonite.org))

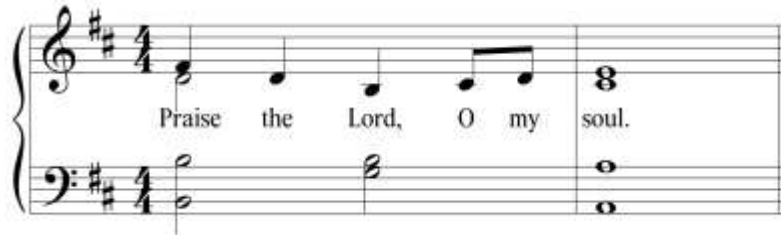
Maintenance Coordinator: Terry Rouse ([maintenance@rainbowmennonite.org](mailto:maintenance@rainbowmennonite.org))

## Psalm 104: A Litany of Praise

Lord our God, you are very great.



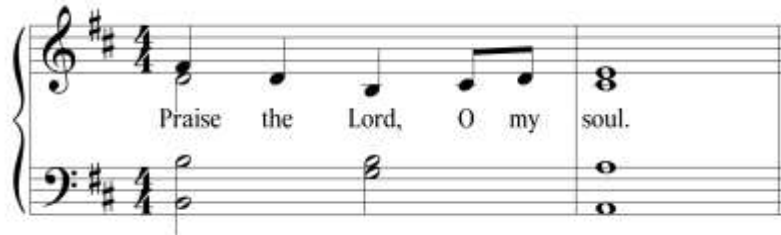
You are clothed with splendor and majesty, and wrapped in light as with a garment.



You have made the winds your messengers and flames of fire your servants.



You water the fields and shelter the birds; you bring forth bread and wine to fill our hearts.



How many are your works, O Lord!

In wisdom you made them all; the earth is full of your creatures.

**You open your hand and give us all good things.**

**Send us your Spirit, create in us a new heart,**

**And renew the face of the earth.**

Lord, may your glory endure forever.

We will sing praise to you as long as we live.

# Let all creation dance

ST JOHN 66. 66. 88

1 Let all cre - a - tion dance in en - er - gies sub -  
2 Our own a - maz - ing earth, with sun - light, cloud, and  
3 Lift heart and soul and voice: in Christ all prais - es

lime, as or - der turns with chance, un -  
storms, and life's a - bun - dant growth in  
meet, and na - ture shall re - joice as

fold - ing space and time; for na - ture's art in  
love - ly shapes and forms is made for praise, a  
all is made com - plete. In hope be strong, all

glo - ry grows, and new - ly shows God's mind and heart.  
fra - gile whole, and from its soul heaven's mu - sic plays.  
life be - friend, and kind - ly tend cre - a - tion's song.

Text: Brian Wren

Copyright © 1991 Hope Publishing Company, Carol Stream, IL 60188. All rights reserved. Used by permission.  
Music: *The Parish Choir Vol. 3*, 1851